

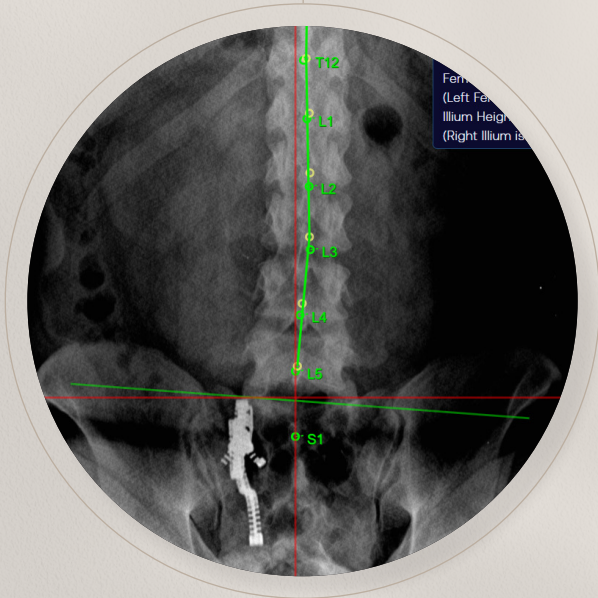
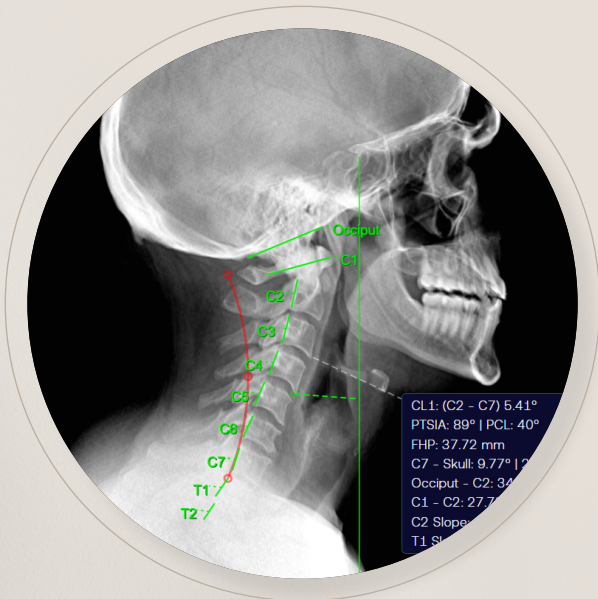


MaxLiving X-ray Analysis Software

Streamline your practice with the clinically advanced X-ray analysis software, designed to enhance precision, speed up workflows, and elevate patient care. This innovative, web-based platform gives you and your team the power to access, annotate, and analyze X-rays from anywhere, offering flexibility and efficiency like never before. With features tailored specifically for the MaxLiving network, this tool simplifies complex processes and ensures your team can provide exceptional care with ease.

SOFTWARE BENEFITS

- **True Web-Based System:**
Access and annotate X-rays from any location with an internet connection.
- **Unlimited Cloud Storage:**
Secure and real-time backups for all your data.
- **Unlimited User Accounts:**
Easily onboard your entire team without extra costs.
- **MaxLiving-Developed Analysis Sequences:**
Tailored for lateral cervical, nasium, APLP, lateral lumbar, and base posterior views.
- **CA-Friendly Interface:**
Chiropractic Assistants can confidently perform initial annotations with minimal training.
- **Dual Sequencing Options:**
Choose between basic and advanced analysis to fit your needs.
- **Multiple Display Views:**
Patient-friendly, adjusting, and advanced analysis modes.
- **Pre- and Post-Comparison Tool:**
Visualize patient progress effortlessly.
- **Digital Patient Sharing Tool:**
Share annotated X-rays and insights directly with patients.
- **Color-Coded Measurements:**
Simplify analysis with visual guidance for measurement listings.





MaxLiving X-ray Analysis Software

Getting Started

We've made onboarding simple and seamless, offering a white-glove experience every step of the way:

Step 1: Complete the Online Form

Fill out our quick online form to provide the information needed to customize your setup.

Step 2: Migrate Data & Integrate Software

Our team will handle data migration and software integration, ensuring a smooth and efficient transition.

Step 3: Streamline X-Ray Analysis

Receive hands-on training for your team to quickly master the software and optimize X-ray analysis.

Pricing Structure

Initial Cost:
\$3,000

Monthly Fee:
\$349/month*
(12-month commitment required)

COMPETITOR COMPARISON

Feature	MaxLiving	Posture Ray	2020	Chirosight
Initial Cost	\$3,000	\$6,000 (\$5,800 software + \$200 startup fee)	\$4,649 (\$4,500 software + \$149 activation fee)	\$4,500 initial fee
Cost - Ongoing (Monthly)	\$349	\$125 (after Year 1)	\$83 (after Year 5)	\$200
Cloud-Based (Web-Based)	✓	✗	✗	✗
CA-Friendly (Easy to Use)	✓	✓	✗	✗
Doctor Time Efficiency	✓	✓	✗	✗
Unique to MaxLiving Workflow	✓	✗	✗	✗
Color-Coded Ranges for Measurement Listings	✓	✗	✗	✗
Unlimited Cloud Storage	✓	✗	✗	✗
Unlimited User Accounts	✓	✗	✗	✗
Digital Patient Sharing Tool	✓	✗	✗	✗
Basic and Advanced Sequencing	✓	✗	✗	✗



Scan to sign up now